

VGA Output
High Definition
Industrial Camera



Model: XGA-800V

Product Feature --- LEADING INSPECTIONS VISION

No PC required, stable and high quality image can be acquired while only being connected with PC Displayer; Low cost, can replace 3CCD cameras, but price is 10~20% of those; 1024x768, 60fps, RGB adjustment separation; One fixed Crosshair line is easy for QC inspection.

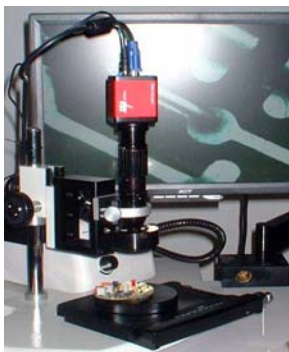
Back view



Product Specification

Model	XGA-800V
Resolution	1024×768
Pixel Size	5.2um×5.2um
Optical Size	1/2.5
Spectral Range	400nm-1000nm
Sensitivity	1.8v/lux-sec@550nm
Dynamic Range	62db
Scan Mode	Progressive Scanning
Color Depth	8:8:8 RGB output,
Frame Rate	60fps@1024×768
Color Adjustment	RGB adjustment separately
White Balance	Manual
Crosshair line	One fixed crosshair line
Output Mode	Standard D-sub 15pin , analog signal
Exposure Balance	Can improve sensitivity under Low illumination degree
Exposure Mode	Manual
Lens Mount	C-Mount
Power Supply	DC 5V
Dimension	70mm×52mm×51mm
Operation Temperature	0-60°C
Operation Humidity	20%-80%

Application Figure



Application Field

PCB inspection, Semiconductor and other components inspection, Medical Image, Microscope Image, Product Package, Quality Inspection, Robot Vision and so on...

VGA Output

High Definition

Industrial Camera



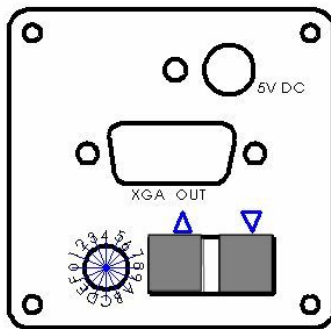
Model: XGA-800VM

Product Feature **LEADING INSPECTIONS VISION**

No PC required, stable and high quality image can be acquired while only being connected with PC Displayer; Low cost, can replace 3CCD cameras, but price is 10~20% of those; 60fps@1024x768

RGB adjustment separation; Built-in 4 vertical and 4 horizontal crosshair lines and can move at full screen; Every line can be in 6 color and width is only one pixel so that can improve orientation precision.

BackView



Application Figure



Application Field

PCB inspection, Semiconductor and other components inspection, Medical Image ,Microscope Image,Product Package, Quality Inspection, Robot Vision and so on...

Product Specification

Model	XGA-800VM
Resolution	1024×768
Pixel Size	5.2um×5.2um
Optical Size	1/2.5
Spectral Range	400nm-1000nm
Sensitivity	1.8v/lux-sec@550nm
Dynamic Range	62db
Scan Mode	Progressive Scanning
Color Depth	8:8:8 RGB output,
Frame Rate	60fps@1024×768
Color Adjustment	RGB adjustment separately
White Balance	Manual
Crosshair line	4 movable crosshair lines
Output Mode	Standard D-sub 15pin , analog signal
Exposure Balance	Can improve sensitivity under Low illumination degree
Exposure Mode	Manual
Lens Mount	C-Mount
Power Supply	DC 5V
Dimension	70mm×52mm×51mm
Operation Temperature	0-60°C
Operation Humidity	20%-80%